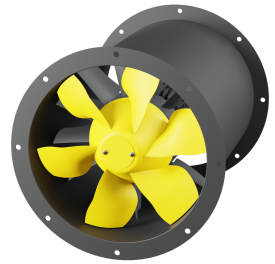


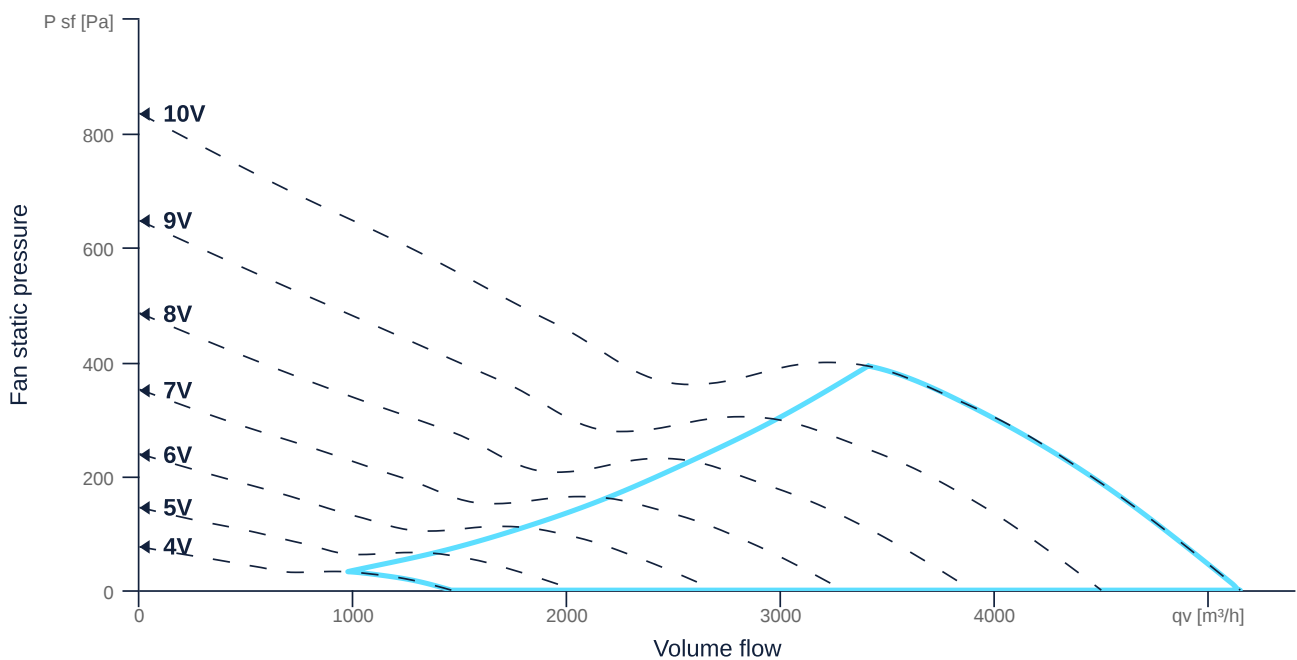
AL 315 EC 01

154136

- Innovative, high-efficiency axial fan
- Optimally tuned, CFD-optimized aerodynamics
- Housing weight optimized, powder coated
- High efficiency IE5 motor, steplessly controllable
- Conveyed medium temperature up to 60 °C in continuous operation
- Exceeds current ErP regulation by 15 - 20%



MAP



GENERAL DATA

Name	Value	Unit	Formula symbol
Duct size	-		WxH _{duct}
Pipe connection size (DN)	DN315		DN
Electrical protection (entire device)	20 A		fuse
Housing material	Steel		mat _{casing}
Impeller material	Steel		mat _{impeller}
Weight	17.2	kg	m
Fan type	Axial		Fan _{type}
Category / Installation situation	B		cat
Sound insulation	No		snd _{ins}
Rated voltage (entire device)	230	V	U _{rated}
Phases (entire device)	1~		phase



zur Produktseite

AL 315 EC 01

154136

ruck

MAXIMAL DATA

Name	Value		Unit	Formula symbol
	50 Hz	60 Hz		
Max. power consumption (device)	900	900	W	$P_{ed, max}$
Max. operating current (device)	5	5	A	$I_{ed, max}$
Max. speed	3010	3010	1/min	n_{max}
Max. stat. efficiency	53.2	53.2	%	η_{es}
Max. fan efficiency	68.4	68.4	%	η_e
Max. flowrate	5150	5150	m ³ /h	$Q_{v, max}$
Max. stat pressure	390	390	Pa	$p_{st, max}$
Max. medium temperature	60	60	°C	$T_{m, max}$
Max. environment temperature	60	60	°C	$T_{amb, max}$
Min. environment temperature	-20	-20	°C	$T_{amb, min}$

MOTOR DATA

Name	Value		Unit	Formula symbol
	50 Hz	60 Hz		
Rated frequency (device)	50.000000			f
Motor type	EC			phase
Control type	stepless-controlled			ctrltype
Installation	IRM (In)			install
Isolation class	ISO F			ISOclass
Motor-protection	TEC			protectmotor
Protection class	IP55			IPmotor
Is pole-changeable	No			polexch
Type of power supply	AC 1~			pwrsupmotor
Rated voltage	220		V	$U_{rated, f1}$
Rated voltage (wiring 2)	277		V	$U_{rated, f2}$
Rated current	5.9		A	$I_{rated, f1}$
Rated current (wiring 2)	5.1		A	$I_{rated, f2}$
Shaft power	750		W	$P_{out, f1}$
Shaft power (wiring 2)	750		W	$P_{out, f2}$
Speed	3000		1/min	n_{f1}
Speed (wiring 2)	3000		1/min	n_{f2}
Efficiency	86.3		%	$\eta_m, f1$
Efficiency (wiring 2)	86.3		%	$\eta_m, f2$
Min. temperature	-20		°C	$T_{motor, min}$
Cos Phi	0.000000	0.000000		cos φ



zur Produktseite

AL 315 EC 01

154136

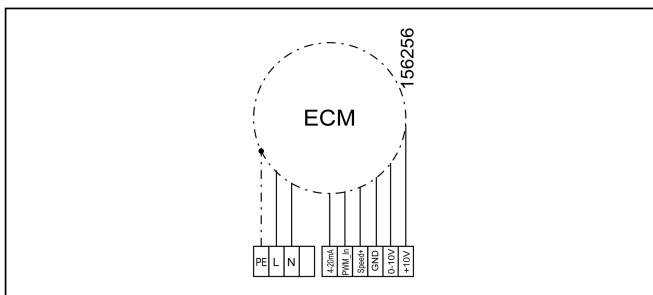
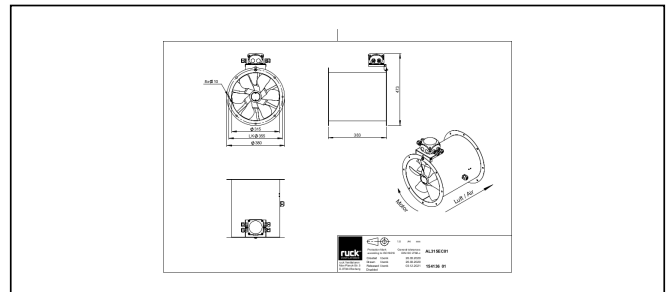
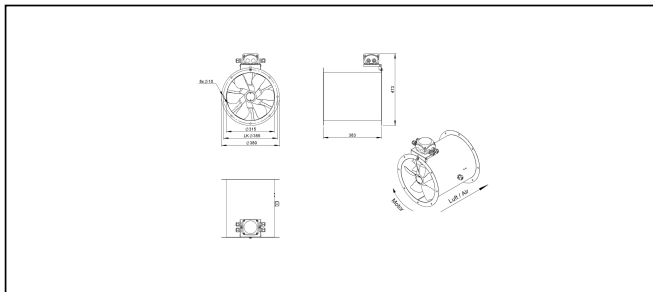
PRODUCT INFORMATION

Name	Value	Unit	Formula symbol
Category / Installation situation	B		cat
Fan type	Axial		Fan type

ERP DATA

Name	Value	Unit	Formula symbol
Speed at the energy efficiency optimum	3009	1/min	n_{opt}
Efficiency level	71.3	%	N
Efficiency category	total		cat efficiency
Input power of the motor at the energy efficiency optimum	0.64	kW	$P_{e, opt}$
Overall efficiency	78.8	%	η_{ges}
Measurement category	B		meas cat
Fan pressure at optimum energy efficiency point	389	Pa	$p_{f, opt}$
Flowrate at energy efficiency optimum	3733	m ³ /h	$q_{v, opt}$

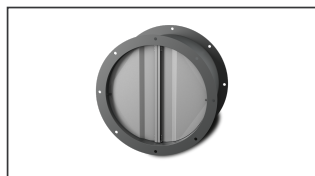
SCHALTPLÄNE / MASSZEICHNUNGEN



zur Produktseite

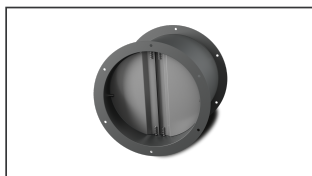
MECHANICAL ACCESSORIES

RVK 315 | 153873



- Automatic tube damper
- Sheet steel, powder coated
- Suitable for outdoor installation
- Flange mounting

RVK H 315 | 155010



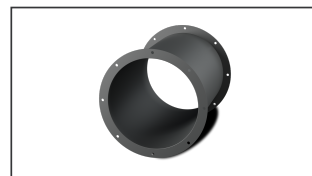
- Automatic tube damper
- Sheet steel, powder coated
- For horizontal installation
- Suitable for outdoor installation
- Flange mounting

RAF 315 | 154016



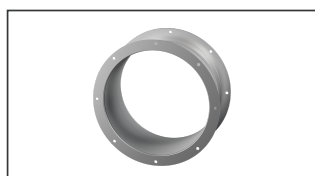
- Round inlet flange
- Sheet steel, powder coated
- Suitable for outdoor installation

RVS 315 | 154174



- Tube connection spigot
- Sheet steel, powder coated
- Suitable for outdoor installation
- Flange mounting

RAS 315 | 154246



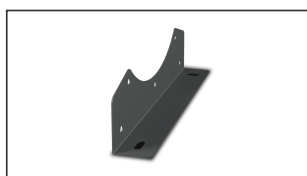
- Round inlet spigot
- Flexible
- Galvanized steel sheet, plastic strap (PES)
- Temperature resistant up to 75 °C

ESD 315 | 153962



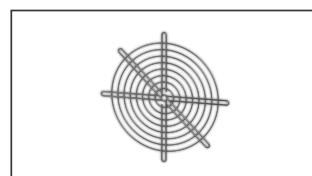
- Inlet cone
- Suitable for outdoor installation

FAL 315 | 154805



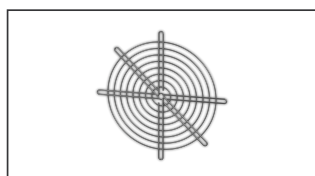
- Mounting foot
- Sheet steel, powder coated

SGW 315 | 154047



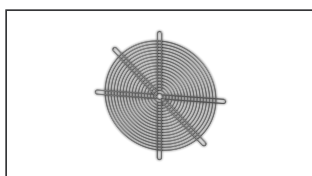
- Protection grille, wide-meshed
- Galvanized steel sheet
- In connection with Inlet cone Protection grille is to be selected one size larger
- Flange mounting

SGW 355 | 154049



- Protection grille, wide-meshed
- Galvanized steel sheet
- In connection with Inlet cone Protection grille is to be selected one size larger
- Flange mounting

SGE 315 | 154058



- Protection grille, close-meshed
- Galvanized steel sheet
- In connection with Inlet cone Protection grille is to be selected one size larger
- Flange mounting

FSD 01 | 155498



- Vibration damper
- All metal design, electrogalvanized

FSD 05 | 155502



- Vibration damper
- Made from natural rubber

CLIMASET 01 | 111314



- Climaset
- For differential pressure measurement



zur Produktseite

AL 315 EC 01

154136

ELECTRICAL ACCESSORIES

GS 02 | 105386



- Isolator switch
- $U_{max} = 400\text{ V}$, 50/60 Hz
- Switching capacity 400 V 3~ = 5,5 kW
- $I_{max} = 16\text{ A}$

MTP 20 | 128146



- Potentiometer 10 k Ω
- Switching contact 1A/250V AC - 2,5A/12V DC
- Max. ambient temperature 50 °C
- VDE

MTP 30 | 143289



- Stepped potentiometer 10 k Ω
- Step 1 + 2 settable 10 % - 100 % Vdc
- Step 3 100 % Vdc
- Supply voltage +10 Vdc

MTP 40 | 147359



- Potentiometer 10 k Ω
- Connection in terminal box
- Max. ambient temperature 50 °C
- PU: 20 pieces

SEN AIR | 148641



- Airflow and temperature transducer
- Measuring range temperature 0...+50 °C
- With adjustable switching threshold (air speed)
- Measuring range air velocity up to 20 m/s

CON P1000 | 115259



- Constant pressure control
- Actual value display possible via optional control unit
- Output 0-10 V DC + FC enable + setpoint reached
- Pressure setting by means of decade switch



zur Produktseite